

Pačhamama

 Esedis Group

SPECIFICATIONS AND TECHNICAL SHEET

OUR MISSION

Today, **48%** of the working population are women. Many of them will have to **manage maternity leave** and, above all, their return to work. A real obstacle course awaits those who choose to breastfeed and **try to continue breastfeeding at work**. The choice to breastfeed or not is very personal, and **each decision must be respected without question***.

For those who choose to embark on the breastfeeding journey, we must provide them with proper support and offer them the most reassuring environment possible so that this experience is positive. We are currently seeing real difficulties for working women who wish to continue breastfeeding after their maternity leave. Lack of space, lack of information, cultural barriers... Continuing can prove to be a challenge.

That is why, with Pachamama, we are committed to improving the daily lives of active mothers who wish to continue breastfeeding at the end of their maternity leave, by offering them a suitable environment.

*Breastfeeding or not is a choice, and it's the best choice.



BREASTFEEDING: A SOCIETAL ISSUE

Breastfeeding is important for the short- and long-term health of babies, young children, and parents. It is recommended that babies be fed:

- . exclusively breast milk (“exclusive breastfeeding”) for the first 6 months of life.
- . exclusively breast milk for 2 years or more, along with other age-appropriate foods from 6 months onwards.

Global breastfeeding goals aim to increase the rate of exclusive breastfeeding for six months or more to at least 50% by 2025 and 70% by 2030.

In Canada, the vast majority of women (91%) begin breastfeeding shortly after giving birth, and more than half of them stop before six months, indicating that they exclusively breastfed their child for a period ranging from a few weeks to six months or more.

This proportion was lower among women in the United States (84%).

Among the women who stopped, multiple reasons were cited. Aside from health reasons for the baby or the mother, returning to work or school often discouraged them from continuing.

Yet, the WHO recommends exclusive breastfeeding for six months, followed by continued breastfeeding for up to two years or more with the introduction of complementary foods.



OUR SOLUTION

The ergonomic position

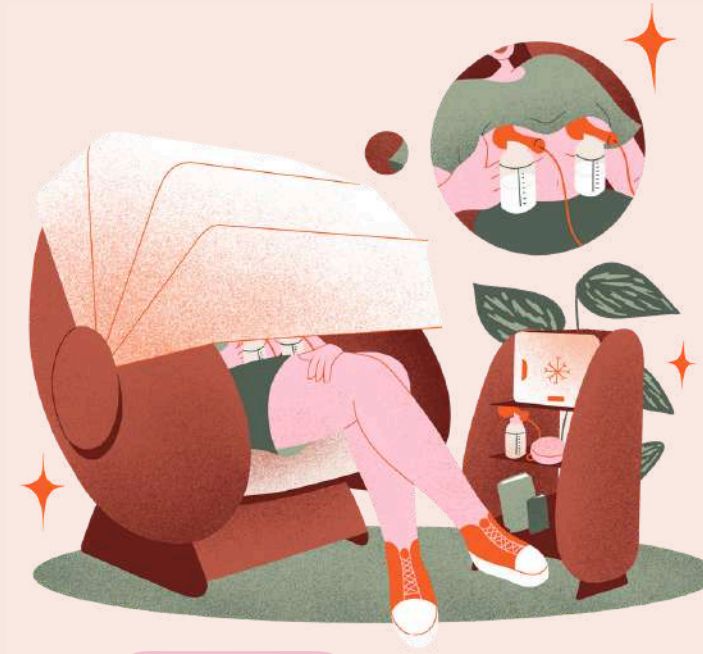
A perfect incline: an upright posture to facilitate milk expression into the breast shields.

The shelves

Movable shelves inside the chair allow you to place the necessary equipment for breast shields and bottles, or a laptop.

A mobile solution

Pachamama is on casters!
This allows you to position the chair to ideally create a micro-nursing space and perfect privacy.



It's free!

Dedicated support for the HR department, including internal communication and access to the Nap&Up app: audio and reservations.

Bottle holder, central shelf—everything has been designed to optimize user comfort.

Visual privacy

Visual privacy

The chair's canopy offers a moment of privacy if the mother feels the need; it can be unfolded.

The auxiliary unit

A breastfeeding space needs a space for storing milk. The auxiliary unit allows you to integrate a dedicated mini-fridge (optional), disinfectant wipes, and a breast pump (optional) into your breastfeeding space.

The mini-fridge

To keep milk fresh.



THE BREASTFEEDING CHAIR

DIMENSION ARMCHAIR

Depth 111 cm / 44 in

Width 95 cm / 37 in

Height 153.3 cm / 60 in

Footprint 1.05 m² / 11 pi²

DIMENSION ADDITIONAL FURNITURE

Depth 50 cm / 20 inch

height 96.5 cm / 38 inch

Width 42.6 cm / 17 inch

WEIGHT

Armchair 47 kg

Additional furniture 7 kg

MATERIALS USED

Oak veneered plywood

KOJIN upholstery

SEAT / BACK

Induction / resistant fabric
KOJIN upholstery
100% cotton & 100% coating
Fire-retardant PVC
850 g/m²

CANOPY

100% Polyester fabric
160 g/m²



SPACE PLANNING

Need help creating a dedicated breastfeeding and pumping area?

We offer a thorough analysis of your project, a personalized proposal, 3D design plans, and finally, the complete installation and delivery of a turnkey space.



SPECIFICATIONS AND TECHNICAL SHEET

PACHAMAMA *by*

Esedis Group

NET POSITIVE GROUP

Ph. +1 437 882 9264 - +1 581 3093 1626

CONTACT@ESEDIS-GROUP.COM

WWW.ESEDIS-GROUP.COM



CERTIFIED
ISO 9001



PT008341